

Atherton Start Well Family Centre

Covering Atherton, Tyldesley, Astley and Mosley Common

Activity Timetable

26th February - 28th March 2024



01942 879012 / 07825 832685

Atherton_cc@wigan.gov.uk

www.facebook.com/AthertonstartWellFamilycentre

Atherton

Monday

Be Well Advisors 9am - 12 noon

Just drop in for information on weight management, mental health, stopping smoking and alcohol reduction with Hayley

Atherton SWFC

Sweaty Mamas £ 9.45am - 10.45am to book

<https://smwigansouth.sweatymama.com/>

Howe Bridge Sports Centre

Bouncing Bunnies £ 9.15am - 11.15am

For children 0-5 years refreshments provided Mondays and Fridays £2.50 per child £3.50 per family

Atherton Baptist Church

Baby massage £ 9.30am - 10.30am £5 per block

A 5 week block of massage classes for babies from 6 weeks - 6 months
Booking required call

01942 879012 / 07825 832685

Atherton SWFC

Tuesday

Parenting Drop in 9am - 10am

Come along for some advice and support on any parenting issues

Atherton SWFC

Coffee Morning Stay and Play 10am - 11.30am

Stay and Play Session for all children

Donations Welcome

**St Georges Church
Atherton**

Wednesday

Childminder Drop in 9am - 11.30am

A stay and play session for childminders

Atherton SWFC

Meadow Mini's 9.30am - 10.30am

A stay and play session for children from 18 months - 4 years

Meadowbank Primary School



Start Well Offer

Community Run

Thursday

All Angels Play Group £ 9am - 10.30am

For children 0-5years
Refreshments will be available and a range of play activities

£2.50

**St Michael's Primary
School**

Well Baby Clinic 9.15am - 11.30am

Please call
0300 707 1245 to make an appointment
Atherton SWFC

Bump and Buggy Walk 9.30am - 10.30am

Meet outside Atherton Start Well Family Centre and join us on a fun, easy walk

Welcome Session/Family Brunch 10.30am - 11.15am

Join us at this informal session for a chance to chat with other parents and enjoy some tasty brunch and fun activities

Atherton SWFC

Term Time Only

sessions with a star are term time only

Friday

Bouncing Bunnies £ 9.15am - 11.15am

For children 0-5years
refreshments provided

Monday and Friday
£2.50 per child £3.50 per family

Atherton Baptist Church

Be Well Advisors 10am - 1pm

Information on weight management, mental health, stop smoking and alcohol reduction with

Darren

01942 836967 to make an appointment

Atherton SWFC

Toni Marie Yoga £ 10am - 11am

Yoga for baby and Mum
To book visit

www.ToniMarieYoga.com

Toni Marie Studios

"From birth to 5 years a child's brain develops more than any other time of life!"

Sessions with a £ may have a small charge

**Be
Well**

Atherton

Monday

Baby Babble

11am - 12 noon

Communication session for babies
0 - 12 months

No booking required

Atherton SWFC



Little Blessings

**Baby, toddler
& their adult group**

11.30am - 1pm


For children 0 - 4 years
Baby and Toddler Play Group
Lunch for the children provided
£1 Donation

No booking required

Dorset Road Community Centre

Toddler Rave

1.30pm - 2.15pm

For children 2 - 4 years 
New exciting session using lots of
different music, exploring sounds
and lights listening to the beat
enjoying freestyle activities helping
your child's confidence, self esteem
and will build social skills.

No booking required

Atherton SWFC

Tuesday

Well Being Walk

11am

30 minute and 1 hour options
available

12pm - 12.30pm

Stay for a drink and an
opportunity to chat to your
community link worker and
healthy routes advisor

Meet in the Reception

For more information call

01942 870403

**Howe Bridge Leisure
Centre**

Breastfeeding Support Group

9.30am - 10.30am

Sessions are run by the Local
NHS Community Infant feeding
team, they can support with
positioning, attachment,
expressing and much more!

Just come along

Atherton SWFC



Start Well Offer

Community Run

Wednesday

Bloom Baby Classes

Busy Bees £

10am - 10.45am

6-18months

Caterpillar Club

11am - 11.45am

0-6months

Pre book online

www.bloombabyclasses.com/eigh-and-atherton or contact
Sarah on 07810863924

**Dorset Road Community
Centre**

Young Parents Group

1.15pm - 2.45 pm

Group for young parents aged
under 24 and their children.
With the health Visitor to
answer any public health
queries

No booking required

Atherton SWFC

Term Time Only 

sessions with a star are term time only

Thursday



Little Lambs

10am - 11am

Play Group for children 0-4
years

£1.50 per child (includes
Drinks and biscuits)

**St Richards Primary
School**

Toni Marie Yoga

Bump and Me £

Pregnancy Yoga

6pm - 7pm

Yoga for expectant mums

To book visit
www.ToniMarieYoga.com

Toni Marie Studios



Friday

Swim Tot's/Family Swim £

Various times throughout the
week

To book please call 01942
870403

**Howe Bridge
Leisure Centre**

Saturday

Kids Crazy Crafts

Every other Saturday

10am - 12pm

Free Craft Activities to
enjoy for your little ones
Everybody welcome

Starts 4th November 2023

Atherton Library

Sunday

Kids Zumba Class £

10.30am - 11.15am

6-11years

parents are welcome to join too!

To book visit

www.feeltheheatfitness.co.uk

Fit'N'Funky Ladies Gym

Tyldesley

Monday



Mini Giants Parent and Toddler Group £

Every Monday & Friday
9.30am - 11.15am
A fun group for ages
0-5 years
www.facebook.com/minigiantswigan/
Booking required

Tyldesley Site

"Everyday experiences shape your baby's brain from your daily routines to the people your baby meets"

Start Well Offer

Community Run

Tuesday



Story and Rhyme 9.30am - 10.30am



Share some fabulous stories with Nicola and join in with activities
2 years +
(younger siblings always welcome)
No booking required

Tyldesley Library



Family Swim £

11.15am-12.15pm

To book please call 01942 870403

Pelican Centre

Wednesday

Parent Support Drop in 9am - 10am

Come along for advice and support on any parenting issues

Tyldesley Site



Term Time Only

Sessions with a star are term time only



Thursday

King's Church 10am - 12noon

Coffee Morning
All Welcome!

FREE Refreshments
1st Thursday of each month

Tyldesley Site

Community Coffee morning 3rd Thursday of the month 10-1pm

Free hot and cold drinks and toast available, meet new friends and take part in activities

Tyldesley Independent Methodist Church

Together for Tea 1st Thursday of the month 1pm - 3pm

Come together for tea and a chat, craft activities available for adults and children

Tyldesley Independent Methodist Church



Friday



Baby Babble 9.30am - 10.30am

Communication session for babies 0 - 12 months.
No booking required

Tyldesley Site



Mini Giants Parent and Toddler Group £

Every Monday & Friday
9.30am - 11.15am
A fun group for ages 0-5 years
www.facebook.com/minigiantswigan/
Booking required

Tyldesley Site



Sessions with a £ may have a small charge

Tyldesley

Monday

Childminder Drop in

9.30am - 11.30am

A stay and play session for childminders

Tyldesley Site



Homework Club

Monday & Friday
4.30pm - 5.30pm

Email unityasoneyc@yahoo.com

Tel - 07731930752

Shakerley Community Centre



Tuesday

Well Baby Clinic

1.30pm - 3.30pm

With your local health visiting team
Please ring 0300 707 1245 to make an appointment

Tyldesley Site



Messy Explorers

1pm - 1.45pm &
2.15pm-3pm

For children 6 - 18 months
Please bring spare clothes and a towel so you can enjoy the messy fun!
No booking required

Tyldesley Site

Teaching Assistant Course L2

4pm - 8.30pm

For more information contact
01942 356580
leanne@discoverct.co.uk

Tyldesley Site

Discover
Training CIC

Wednesday

Toddler Group

10am - 12 noon

FREE Drop in craft session for children.

Merly's Kitchen
FREE lunch 12-2pm

Shakerley Community Centre



Mini Maestro's £

11am - 11.45am

A fun musical session for children aged 2+
£2 per child £1 for each additional child

Tyldesley Site

"Loving relationships are essential to a child's healthy development"

Sessions with a £ may have a small charge

Thursday

Inflatable Fun Swim £

1pm - 2pm

Please book online
www.pelicantyldesley.co.uk

Pelican Centre



Teaching Assistant Course

L3

4pm - 8.30pm

For more information contact
01942 356580
leanne@discoverct.co.uk

Tyldesley Site

Start Well Offer

Community Run



Friday

Family Swim £

Various times

throughout the week

Please book online
www.pelicantyldesley.co.uk

Pelican Centre

Saturday

MaTCH

(Men and their children)

10am - 12noon

A chance for Dad's and male carers to get to know each other and have fun with their children 0 - 10 years.

No booking required

Tyldesley Site

Lego Club

11am - 12.30pm

No need to book just drop in, all ages welcome

Tyldesley Library

Astley/ Mosley Common

Monday

Zumba £

1.30 - 2.30pm

Contact Gabby to book on
07841117029

Tai Chai £

6.45pm - 7.45pm

contact Kath on **07534086447**

Beehive Community Centre

**Martial Arts and Self Defence
£**

8pm - 9.30pm

Age 16+

Beehive Community Centre



Start Well Offer

Community Run

Tuesday

Seedlings £

Parent and Toddler Group

10am-12pm & 1pm-3pm

**Drinks and refreshments
provided**

60p - Adult & 1 child

**£1 Adult & more than one
child**

Astley Christian Fellowship

Tae Kwondo Classes £

Little Tiger Cubs

4pm - 4.45pm (3-5years)

Active Tigers (5 years +)

4.45pm - 5.45pm

FREE TRAIL LESSON

www.uktc.co.uk

Beehive Community Centre

Adult Yoga £

Tuesdays and Thursdays

6pm - 7pm

Call Donna to book on

07706570646

**Beehive Community
Centre**

Wednesday

Baby Massage £

9.30am - 10.30am

Starting 17th January 2024

£5 per block for 5 weeks

**Lovely, relaxing, 5 weekly
sessions from babies**

6 weeks - 6 months

**Booking required call us on
01942 879012**

**Parr Bridge Health & Well
Being Centre**

Zumba £

1.30pm - 2.30pm

Contact Gabby to book on
07841117029

Beehive Community Centre

Self Defence £

7.30pm - 9.30pm

Contact Dave to book on
07910984331

Beehive Community Centre



Thursday

Toddler Group

9.30am - 11.00am

**A friendly group for children
age 0-5 years**

St John's Church



**Grow Baby Sensory Group
£**

9.30am - 10.30am

& 10.45am - 11.45am

**A fun friendly group for babies
0-12 months
to book please contact Jamie
on 07986871202**

St Ambrose Parish Hall



Friday

Shop £

**open for food, clothing,
books, DVDs and toys**

Tues - Thurs

9.30am - 1pm

Fri & Sat 9.30am - 1pm

Café £

Open

9.30am - 11.30am

Beehive Community Centre



**Sessions with a £ may
have a small charge**

Astley Tot's Plot

Tuesday

Childminder Drop in
9.30am - 11.30am

A stay and play session for
childminders

Astley Tot's Plot



Thursday

Gardening Club
10am - 1pm

Community gardening club
Come and support us to
improve our green spaces

For more info contact Kath on
07952567633

Astley Tot's Plot



Saturday

Astley Community
Football Club
Under 8s

For more information
contact Lee on
07891800103
Refreshments in Astley
Tots Plot

Astley Tot's Plot



**"A chatty
child is a
happy child"**
**The best thing
for language
learning is
face to face
conversation
and play**



Term Time
Only ★

Sessions with a star are term
time only



Sessions with a £ may
have a small charge

Start Well Offer

Community Run



Back to Basics ★
play Session
1.30pm - 2.30pm

A fantastic physical indoor
and outdoor session for
children ages
18 months - 4 years
No booking required

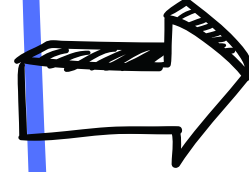
Astley Tot's Plot



Session Pathway

Welcome session/ brunch

This is an informal and friendly session. Join us for light refreshments and a chance to chat to us to find out about the sessions and what we offer in our centres. There are other parents and carers there to chat to as well. If you are feeling active, you can combine it with the Bump and Buggy Walk.



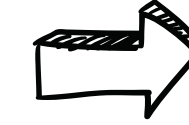
Infant Feeding Support Group

If you are expecting a baby or breastfeeding you are welcome to come along to our support group. Led by the infant feeding team, it offers advice, support and guidance and a chance to meet other families.



Bump and Buggy Walk All ages welcome including parent's to be

This is a wonderful way to get out of the house and get active, it's a friendly guided walk locally and then you can join us for refreshments after it if you would like. We would love to see you there.



Introducing Solids Foods 0-6 months

Aimed at parents and carers of babies approaching 6 months old and getting ready to start on solid foods. This session is run by the health visiting team and is packed full of useful information and advice.



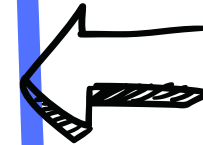
Messy Explorers 6 - 18months

Lots of messy fun to help your little one use their senses and learn through play. This session helps them to start exploring and finding out about the world around them.



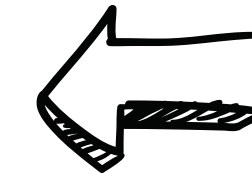
MatCh Men and their children 0-10 years

A Saturday morning session for Dad's and male carers of newborns to 10 years old to come together to chill and enjoy activities with their children. There is lots of support for each other at this group and if you are wondering if its for you, then you should definitely come along and find out!



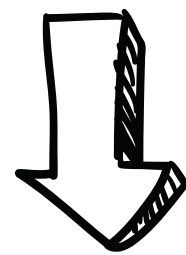
Baby Babble 0-12 months

A really exciting group for our little ones to use all of their senses to develop their communication skills. This session combines messy play, tummy time, singing, talking and most of all fun.



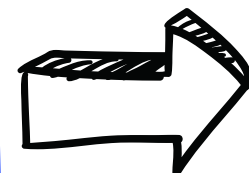
Baby Massage 0 - 6 months

This is a lovely, relaxing session to build on bonding with your baby through nurturing touch that can be used at home too.



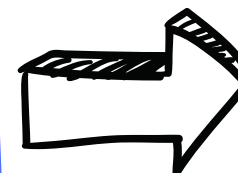
Back to Basics Play Session 18 months - 4years

This session takes place indoors and outdoors and is so much fun, it helps to give children the skills they need to start nursery and school all through play. It supports children to play with each other and to start to do some things for themselves.



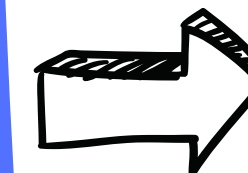
Toddler Rave 2 - 4 years

This session helps to improve self confidence through the power of music and dance. To help develop essential muscle groups and aid writing in later life. Lots of fun for toddlers and adults.



Story and Rhyme 2+ years

Join us at Tyldesley Library for fun and activities linked to a different story every week, why not borrow a few books whilst you are there to carry on the fun at home?



Mini Maestro's 2+ years

A fun packed session with Sarah who will lead you through a musical journey using singing, actions and instruments from nursery rhymes, traditional music, the top 40 and everything in between

Support for families with Special Educational Needs and Disabilities (SEND)



Are you a parent/carer of a child with additional needs?

Do you have a query, concern or feedback you would like to share?

Book on to one of our SEND virtual sessions!

Wigan Council SEND service, Wigan SENDIASS and Parent Carer Forum are holding monthly sessions where you can book an appointment to talk with us from the comfort of your own home. We can offer advice, information about support for your child/children with additional needs, and signpost you to events, training and activities in your local community.

If you have any questions, please email local.offer@wigan.gov.uk







Scan the QR code for more information

The support what we offer is different for each individual and we tailor any support according to your child's specific needs which might include face-to-face meetings, contact by telephone and/or email.

We offer free, impartial information, advice and support to families of children and young people 0-25yrs who have Special Educational Needs or Disabilities (SEND).

Our offer can include:

- Providing information, advice and support
- Signposting to SEND services which are available in Wigan
- Links to local parent support groups and forums
- Support and advocacy within meetings
- Support in resolving disagreements, mediation and tribunals
- Explaining the Educational, Health and Care Plan (EHCP) process
- Useful Information

Wigan Educational Psychology Service

Offering 45 minute session for parents with pre school children who would like support, information or advice about play, sharing and turn taking skills. Supporting your child with big emotions or communication skills.

Sessions available at Atherton Start Well Family Centre call us on 01942 879012 to make an appointment




Scan the QR Code for local SEND information

Wigan Council SEND Team are here to support parent carers of children and young people aged 0-25 years with additional needs (no diagnosis necessary). Giving parents the opportunity to share experiences and get peer support.

Special Educational Needs and Disabilities (SEND)

LOCAL OFFER

Services and support available from education, health and social care services and where to go for information and advice.



www.wigan.gov.uk/sendlocaloffer

Wigan Portage Service

Offering a service for young children who have additional needs and are not yet accessing a nursery provision. Helping parents and children play together, both at home and in groups whilst also helping support the transition to nursery

For more information contact the early learning team on 01942 828849

Health Information

Midwives

Midwives providing antenatal clinics and initial booking appointments to enable continuity of care for women in the local community

0300 707 1023 / 0300 707 1102

Well Baby Clinic

Our Clinics will support, advise and assist you to keep your little ones healthy and happy. Call for an appointment to weigh and measure your baby and to meet your local Health Visitor.

Tuesday 1:30pm - 3:30pm at Tyldesley Linked Site Poplar Street, Tyldesley M29 8AX

Thursday 9:15am - 11:15am Atherton Start Well Family Centre Formby Avenue, Atherton M46 0HX

Please call 0300 707 1245 to make an appointment

Be Well Health Advisors

Can support with Weight Management, Stopping Smoking, Mental Well Being, Alcohol reduction and Physical Activity

The Healthy Routes team have a drop in session with Hayley at Atherton Start Well Family Centre every Monday 9am - 12noon or you can make an appointment to see Darren on a Friday 10am - 1pm please contact them on **01942 836967**

Healthy Start Vitamins

You can get your vitamins from;

Atherton Start Well Family Centre Monday - Friday 8.30am - 4.30pm

Tyldesley Linked Site - During session times

Mosley Common Linked Site – During session times

VITAMINS ARE CURRENTLY FREE FOR ALL CHILDREN 0-5 YEARS AND PREGNANT LADIES

Please bring along your Healthy Start card if you have one

FREE

FREE

Health Visiting Service

The health visiting service offer is available to all children and families, including children with additional needs. They provide advice, information and support to families and children and help parents make decisions that improve their family's future health and well-being

Please see our local offer at www.wwl.nhs.uk or Tel

0300 707 1243

If you scan this QR code you will be able to get in touch with your local health visiting team as well as have access to lots of information and advice that covers topics such as:

- Maternal mental Health week
- Maternal, Paternal and Partner Health and well being
- Toileting and potty training
- Sleep Routines
- Infant feeding and healthy eating
- Speech and language
- School readiness



Scan for more information

The ABCs of Safer Sleep



Health Advice - Scan Me!

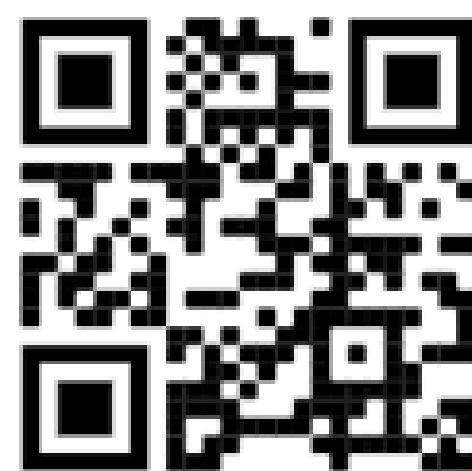


www.firststepsnutrition.org

Did you know that Start Well Family Centres give free vitamins to pregnant ladies and children under 5 living in Wigan?



Scan QR Code to find out more information



<https://www.nhs.uk/change4life>

Ante Natal video workshops:

Brain development and early communication

antenatal to 6-8 weeks

Transition womb to world

Feeding your baby

Managing expectation

Nappies and bathing

Midwives labour and birth

Car Seat Safety



Parenting Support

Family Transitions

Triple P Family Transitions Programme for separate parents experiencing conflict in their relationship

5 weekly sessions - 2 hours long

To book or for further information please email familytransitions@wigan.gov.uk or scan the QR code



Young Parents Group

For young parents under 25, covering lots of key public Health messages including weaning, messy play, brain development, cooking, emotional health and well being, sexual health, career support, dads matters and much more

Drop in every Wednesday
1.15pm - 2.45pm

Atherton Start Well Family Centre

Atherton Family Forum



A meeting for parents and carers who live in the Atherton, Tyldesley, Astley and Mosley Common areas and who currently use our services or may do in the future to make sure that our Family Centre meets the needs of our local community

For more information call us on
01942 879012

Attend this informal session to find out more
Under 5's welcome to attend with parents and carers

Book on via Atherton_cc@wigan.gov.uk or call 01942 879012



Essential Parent is an expert-led digital library and eDelivery system that supports NHS and private healthcare professionals and patients

Coming soon!!



Free digital mental wellbeing support for adults across the UK



Offering 45 minute session for parents with pre school children who would like support, information or advice about play, sharing and turn taking skills. Supporting your child with big emotions or communication skills.

Sessions available at Atherton Start Well Family Centre call us on 01942 879012 to make an appointment

Parenting Drop in
Tuesdays 9am - 10am Atherton SWFC
Wednesdays 9am - 10am Tyldesley Site

Come along for some advice and support on any parenting issues



Online mental wellbeing community for young people aged 10-25



Adult Learning Offer

Various adult learning courses on offer at Atherton Start Well Family Centre and The Greengrass Centre
Call 01942 879012 (Atherton Start Well Family Centre) or 01942 892168 (The Green Grass Centre) for more information

Other Useful Services

Adult Learning Offer

- Various adult learning courses
- Level 2 Supporting Teaching and Learning
 - BTEC Level 1 Introductory Award in caring for children under 5
 - BTEC Level 1 Award Business
 - Teaching Assistant Level 2
 - Teaching Assistant Level 3

For more information
call 01942 879012
(Atherton Start Well Family Centre)

Captain Seaweed's Pirate Park at Atherton Start
Well Family Centre, Formby Ave, Atherton,
M46 0HX



Monday - Friday 9am - 4.30pm for
ALL families and children aged under 7

Start Well Registration

You can register by completing the Start
Well registration form online:



Or you can pop into Atherton SWFC or
one of our link sites to complete it.



'Our Town' Directory

Our Town Directory brings together local
support and things to do in the community
whether you are living, visiting or working
in the Wigan Borough.



Save a baby's life

This workshop covers infant life support,
choking and drowning and is suitable for
anyone who cares for a baby (parent, siblings,
grandparents and carers.)

To book a place call 01942 879012/ 07825
832685



2 Year Funding

Free 2 year
old provision.

Find out if you are eligible today



I get 15 hours
free childcare
every week!

Your 2-year old may be able to access free childcare if :

- You and your family are in receipt of certain benefits and have an income of less than £16,190 (£15,400 if on Universal Credit),
- If you are a non-EEA citizen who cannot claim benefits, and get support under the Immigration and Asylum Act
- The child is Looked After by the Local Authority or previously been Looked After,
- They are Adopted,
- They are in receipt of Disability Living Allowance.
- They have been identified as 'a child in need', as they have a disability or a child protection plan



Play
exciting
and
fun
activities



Learn
how to
make
friends
and
socialise



Develop
basic
language
skills



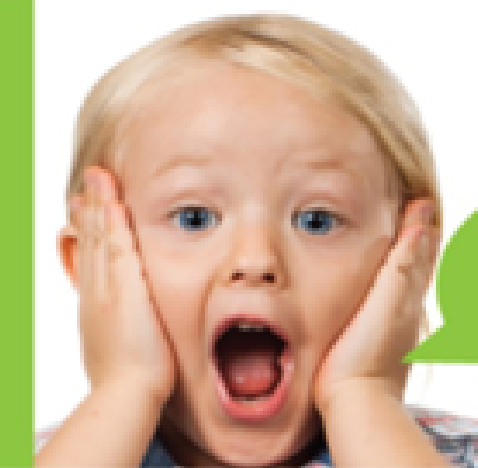
Be ready
to start
school
in
a few
years

Those parents who are in receipt of benefits (Universal Credit or Child Tax Credit) will need to apply online to confirm eligibility. For Looked After, Adopted or children receiving DLA please go to step 2.

What are the next steps?

1. Apply online at www.wigan.gov.uk/2yearoldfunding or scan the QR code below.
2. Choose a childcare provider at www.wigan.gov.uk/familydirectory
3. Take your eligibility letter, your child's adoption certificate, or DLA award letter along to your chosen childcare provider
4. Your child can start the term after their 2nd birthday

30 hours
childcare



I get 30 hours
free childcare
every week!

Did you know?

All three and four-year-old children are entitled to free early education and childcare for 15 hours per week, term time only (38 weeks). Some children are also entitled to an additional

15 hours a week providing their parents meet the qualifying criteria. Find out more about the 30 hour entitlement at www.gov.uk/30-hours-free-childcare



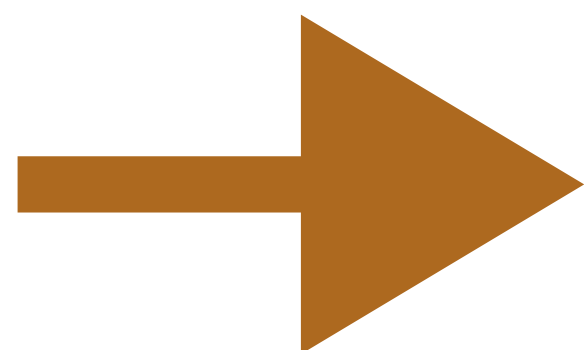
For more information visit
www.wigan.gov.uk/familydirectory
Email: leyep@wigan.gov.uk
For information on support with your
childcare costs visit
www.childcarechoices.gov.uk



Volunteer with us



Scan QR Code for
our volunteer
opportunities



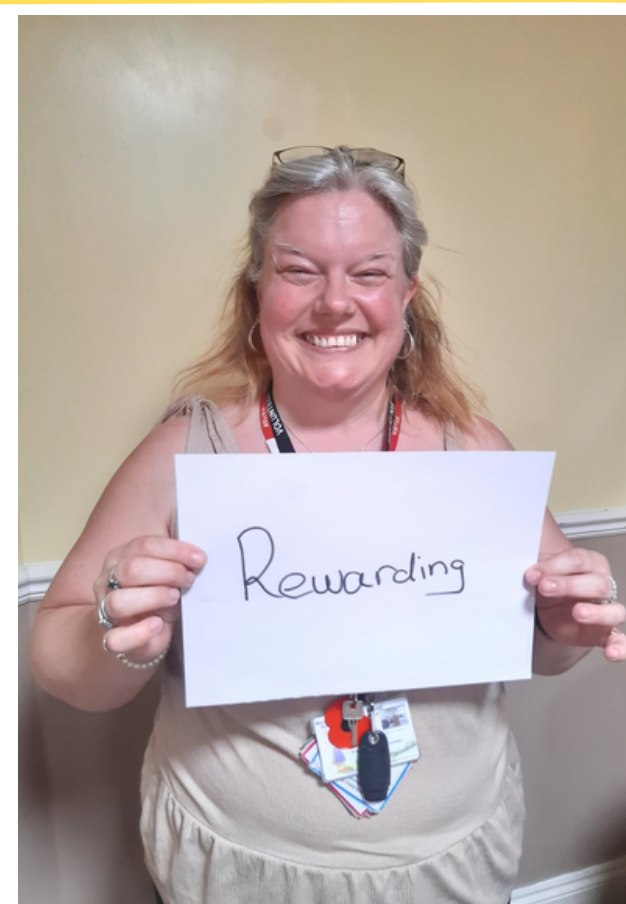
Volunteers play a massive part in what we do within our Start Well Family Centres. Volunteering is a great way to learn new skills and gain knowledge and experience to get yourself back into work or a change of career. Full Training is provided.



Meet some of our Volunteers



Sarah



Amanda



Brian

All of our volunteers are valued members of our Start Well Team!

If you are interested in volunteering for us please contact us on 01942 879012

Other Useful Services

TINY Happy PEOPLE
Your words build their world

Tiny Happy People is there to help you develop your child's language skills. Explore the simple activities and play ideas and find out about babies and toddlers' amazing early development.

Simple and fun child development activities to try at home.



**Wigan
Borough
Domestic
Abuse
Service**
DROP INS

**FREE,
CONFIDENTIAL
ADVICE AND
SUPPORT**

**AVAILABLE TO
ANYONE
AFFECTED BY
DOMESTIC
ABUSE**

**NO
APPOINTMENT
OR REFERRAL
NEEDED**

**HELPLINE
MON - FRI
8AM-6PM
01942 311365**



WIGAN

**8:00am - 3:00pm
Monday, Tuesday, Thursday**

DIAS Domestic Violence Centre
Rodney House, King Street, Wigan,
WN1 1BT

**DROP INS OPEN 3
DAYS A WEEK**

**APPOINTMENTS WITHIN
THE COMMUNITY
AVAILABLE ON REQUEST**

LEIGH

**8:00am - 3:00pm
Monday, Tuesday, Thursday**

Well Women Centre, Leigh
The Old Court House
14 Walmesley Road, Leigh, WN7 1YE
Female only/ appointments available for
men within the community.

**citizens
advice**

Free, independent, confidential information and advice on many issues including; money problems, court forms, benefits, work, family matters and housing.



Local Libraries

Visit your local library and see what activities are available

Atherton Library

Atherton Town Hall
Bolton Road
Atherton
Manchester
M46 9JQ



Tel: 01942 404817

Email:

atherton.library@wigan.gov.uk

Opening Times

Monday - Wednesday: 9am - 2pm

Thursday - Friday: 12pm - 5pm

Saturday: 9am - 2pm

Sunday: Closed

Tyldesley Library

Tyldesley Town Hall
Elliot Street
Tyldesley
M29 8EH



Tel: 01942 488497

E-Mail:

tyldesley.library@wigan.gov.uk

Opening Times

Monday - Wednesday: 9am - 2pm

Thursday - Friday: 12pm - 5pm

Saturday: 9am - 2pm

Sunday: Closed

Leigh Library

Turnpike Centre
Civic Square
Market Street
Leigh
WN7 1EB



Tel: 01942 404404

E-mail:

leigh.library@wigan.gov.uk

Opening hours

Monday - Friday: 10am - 4pm

Saturday: 9am - 2pm

Sunday: Closed

Local Libraries Sessions

Atherton Library

Kinit and Knatter

Mondays 10am-12pm



Warm Space Coffee Mornings

Mondays 10am-12pm

Appy Days

Tuesdays 10am - 12pm

Weekly Crafts

Alternate Tuesdays

10am-12pm

Project Linus

2nd Wednesday of the month

10am - 2pm

Days for girls

4th Wednesday of the month

10am-2pm

Dementia Lunch Club

3rd Friday of the month

12pm-2pm

Kids Crazy Crafts

Every other Saturday

12pm - 2pm



**For more
information on
sessions call
01942
404817**

Tyldesley Library

Story and Rhyme

Tuesdays 9.30am-10.30am



Mindful Colouring

Tuesdays

10.30am - 11.30am

Playgroup

Wednesdays 10am - 11am

Citizens Advice bureau

(every 3rd Wednesday of the month)

9.30am-12pm

Knit and Knatter

Thursdays 12pm -2.30pm

Rhyme and Reason Writing Group

Thursdays 2.30pm-3.30pm

Lego Club

Saturdays 11am -12.30pm



**For more
information on
sessions call
01942
488497**

Our Centres

Atherton Start Well Family Centre



Atherton Start Well Family Centre
Formby Ave
Atherton
M46 0HX
Tel: 01942 879012

Tyldesley Site



Tyldesley Site
Poplar Street
Tyldesley
M29 8AX
Tel: 01942 879012

Mosley Common Site



Mosley Common Site
Commnside Road,
Mosley Common,
Tyldesley,
M28 1AE
Tel: 01942 879012

Astley Tot's Plot

Astley Tot's Plot
Parkfield Ave
Tyldesley
M29 7EF
Tel: 01942 879012



Venue Addresses

Atherton

Atherton Start Well Family Centre (ASWFC), Formby Ave, Atherton, M46 0HX 01942 879012 / 07825 832685

Atherton Baptist Church, Tyldesley Road, Atherton M46 9DQ **01942 615895**

Atherton Library, Bolton Road Atherton Manchester M46 9JQ **01942 404817**

Dorset Road Community Centre, Dorset Road, M46 9GL **01942 884184**

Fit N Funky Ladies Gym, Bolton Road, Atherton M46 9JQ **01942 888118**

Greengrass Centre, 49-51 Spa Rd Atherton M46 9NR **01942 892168**

Howe Bridge Leisure Centre, Eckersley Fold Lane, M46 0PJ **01942 870403**

St Georges Church Tavistock St, Atherton, Manchester M46 0LE **01942 892996**

Meadowbank Primary School, Formby Ave, Atherton M46 0HX **01942 874271**

St Michael's Primary School, Leigh Road, Atherton M46 0PA **01942 883118**

St Richards RC Primary School, Flapper Fold Lane, Atherton M46 0HA **01942 882980**

Toni Marie Studios, 25 Derby St, Atherton , M46 0HJ **07434 80961**

Tyldesley

Tyldesley Site, Poplar Street, Tyldesley, M29 8AX 01942 879012 / 07825 832685

Pelican Centre, Castle St, M29 8EG **01942 882722**

Shakerley Community Centre 12 Cumberland Ave, Tyldesley, Manchester M29 8FU **01942 874403**

Tyldesley Library, Elliot Street Tyldesley, M29 8EH **01942 488497**

Tyldesley Independent Methodist Church **01942 665310**

Mosley Common

Mosley Common Linked Site(back of St John's Primary School) Commonside Road, Mosley Common, M28 1AE 01942 879012 / 07825 832685

Astley Pensioners Club 356 Manchester Road, M29 7DY

Astley Tots Plot, Parkfield Ave, M29 7EF **01942 879012 / 07825 832685**

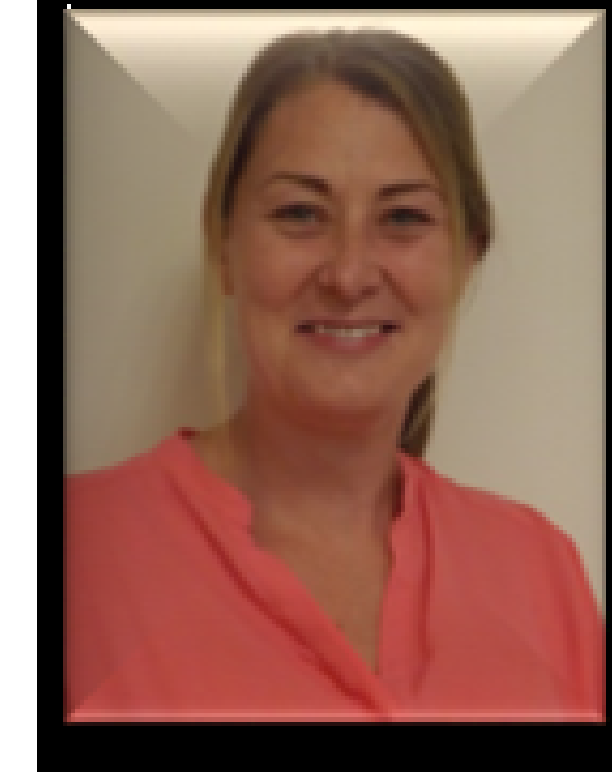
Beehive Community Centre, Lindale Hall, Lindale Road. M28 1BG **01613768229**

Parr Bridge Health & Well Being Centre, Mosley Common Road M29 8RZ **01942 483828**

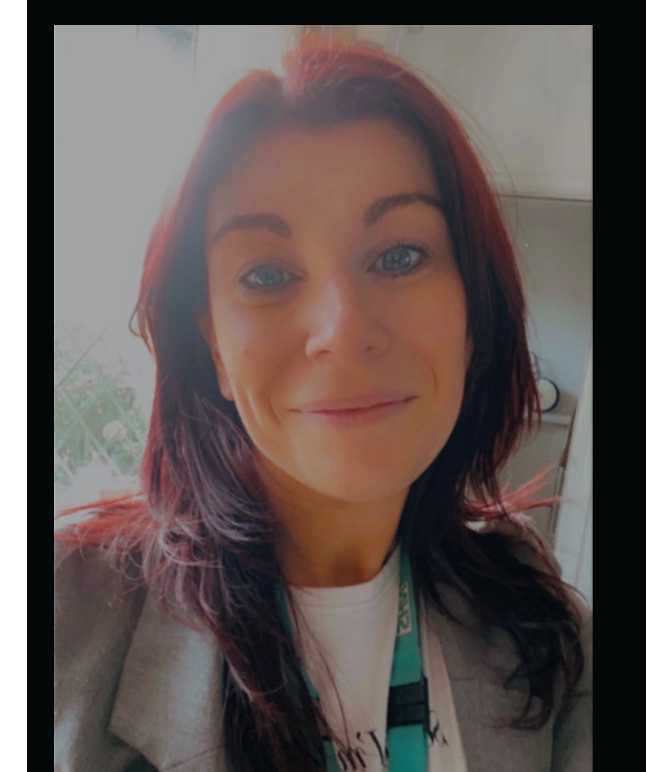
St Ambrose Parish Hall, Manchester Road, M29 7DZ **01942 883912**

St John's Church, Mosley Common Road ,M28 1AN **0161 7902957**

Early Years Workers



Nicola



Kelley

Some of the Start Well Sessions are delivered by our Early Years Workers; Nicola and Kelley. They have lots of experience and qualifications in Early Years and a passion for working with children and their families. Their fun sessions focus on encouraging learning development through play!

You can contact them with any queries or suggestions by contacting the Start Well Family Centre on **01942 879012 / 07825 832685**



Visit our Facebook page for regular updates
www.facebook.com/athertonstartwellfamilycentre

